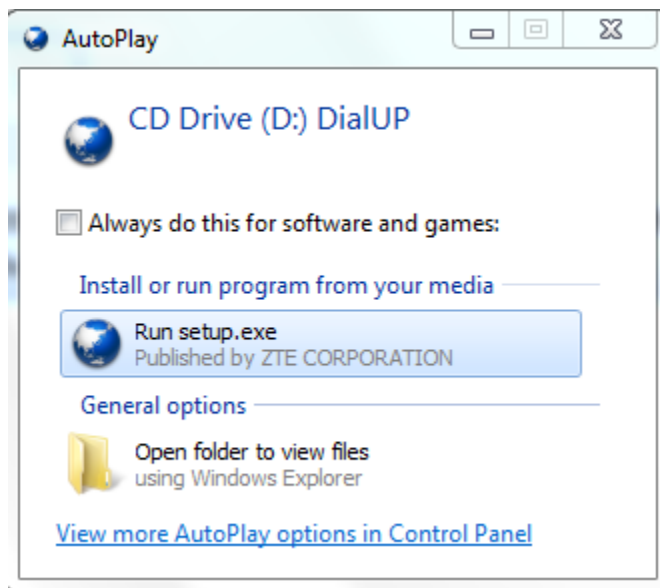


Bayti Tutorial Document

Handset Configuration

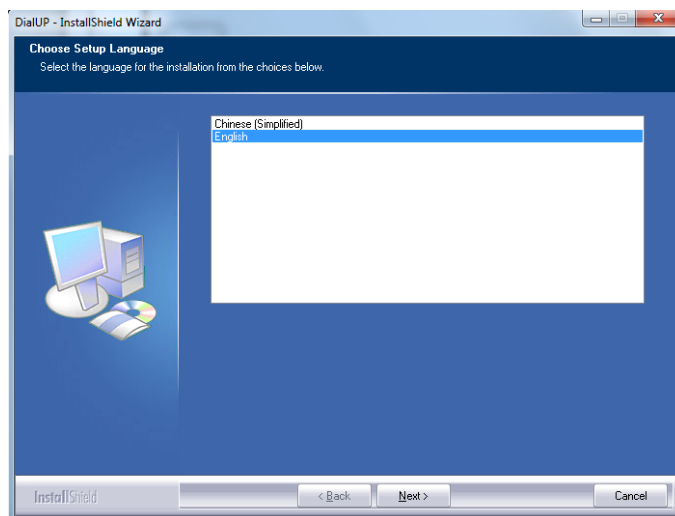
1- Insert the **USB cable** into the computer and wait till the **AutoPlay** starts

- Click **Run Setup.exe**



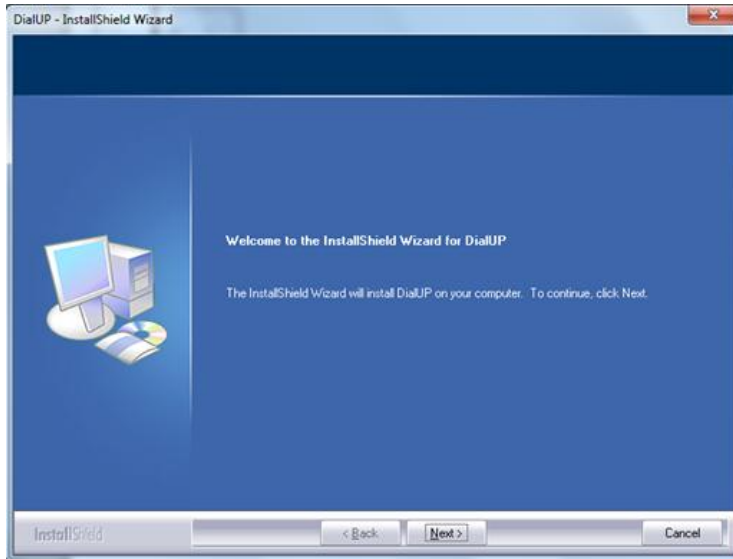
2- **Language Setup** tab

- Select **English** then Click **Next**



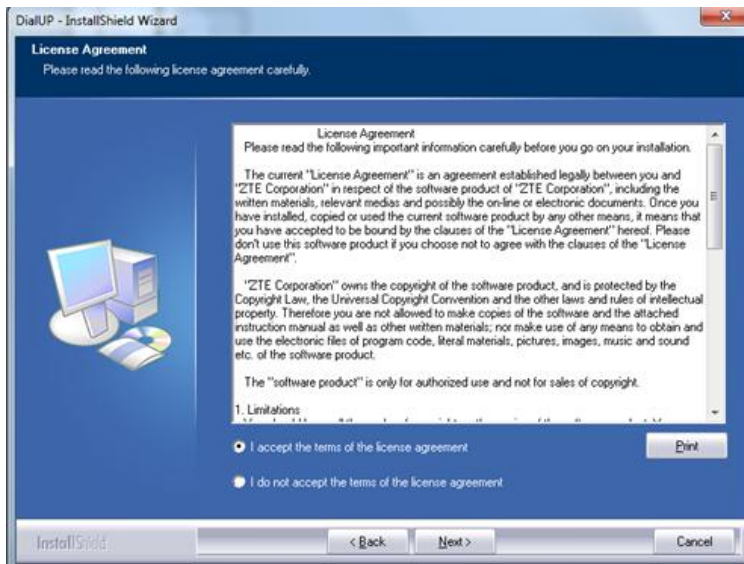
3- Welcome tab

- Click **Next**



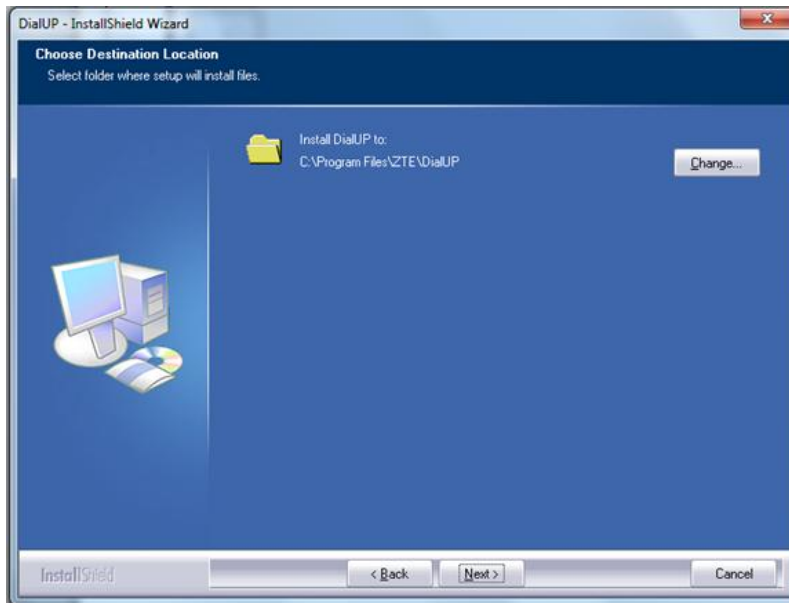
4- License Agreement tab

- Select **"I accept the terms of the license agreement"** then Click **Next**



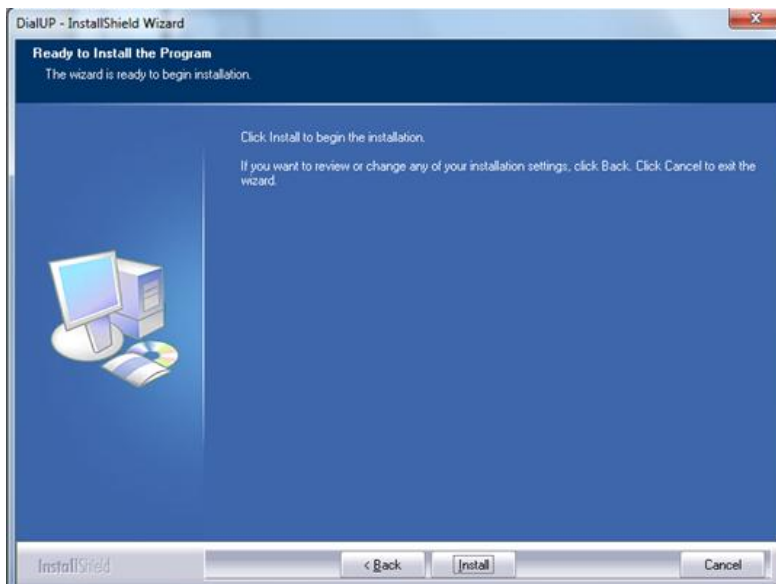
5- Destination Location tab

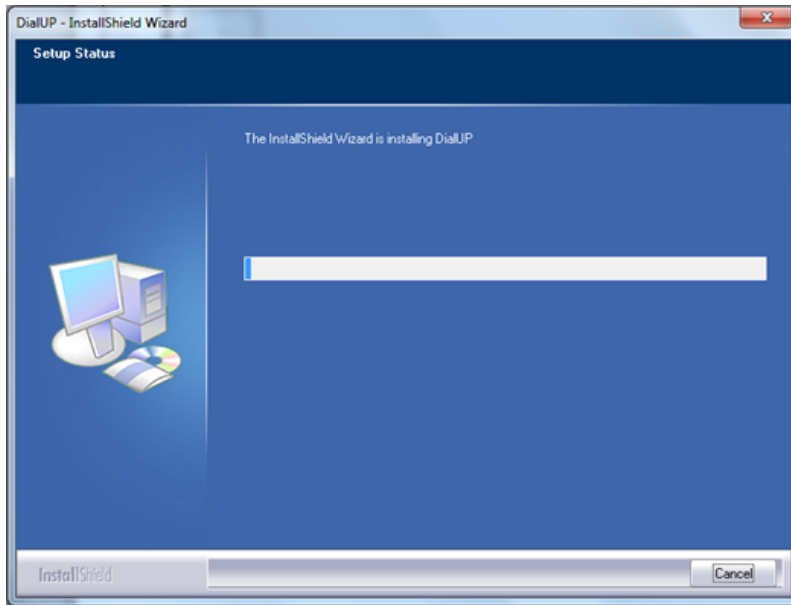
- Click **Next**



6- Installation tab

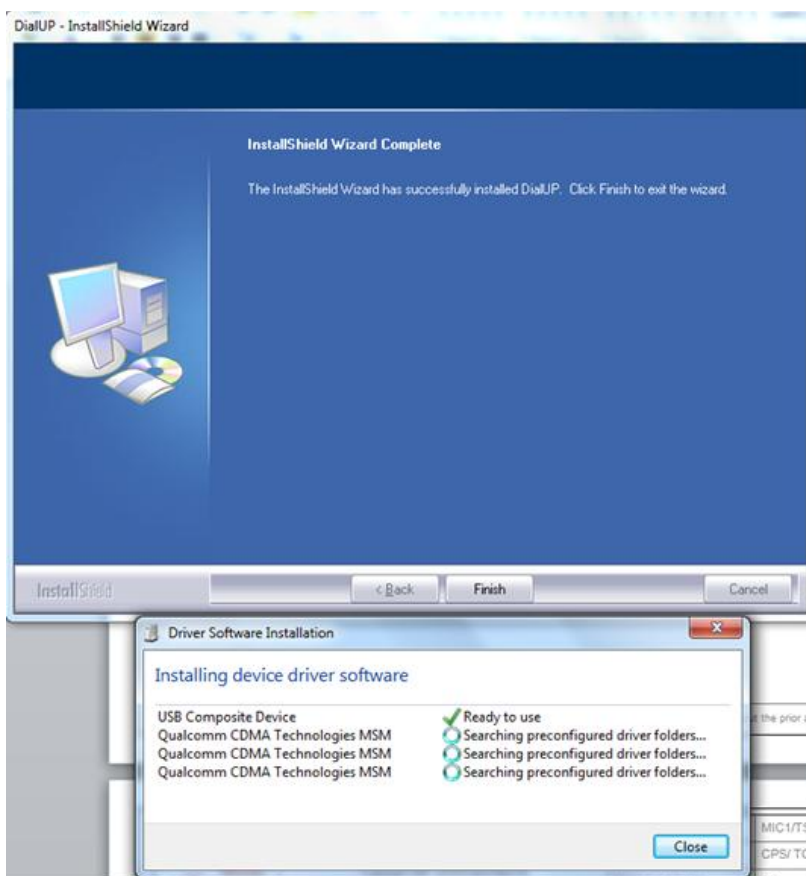
- Click on **Install**
- Wait till the **Installation is Complete**





8- InstallShield Wizard Complete tab

- Click **Finish** & wait till the drivers are Installed



9- A shortcut is created on the desktop

- **Double click** to open the application
- Click on the **“Gear” Icon**  & Select **Network Setting**



10- Fill the fields in the **Network Setting** window

- APN: **wll.mic1.com.lb**
- Username: **mic1**
- Password: **mic1**
- Dial Number: ***99#**
- Click **Apply** then **OK**
- Click **Connect**

