

# HUWAEI

B315 router – 4G



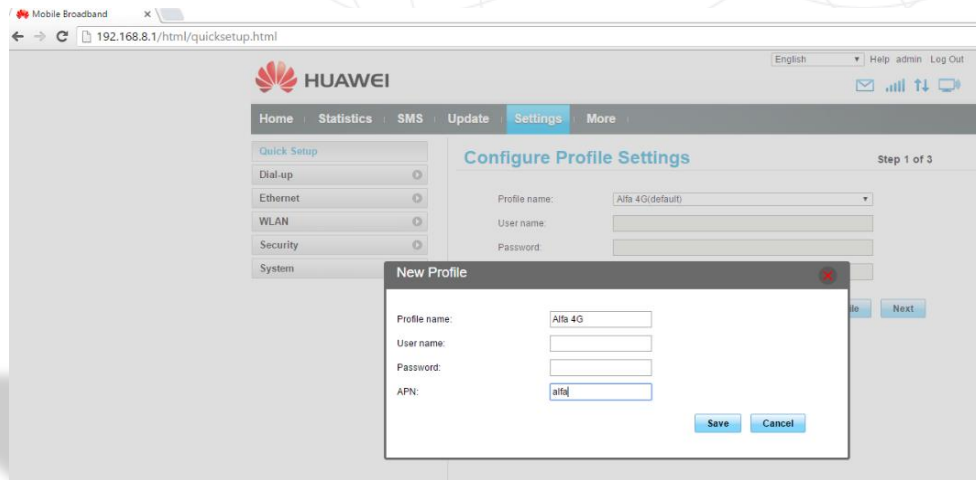
## Insert USIM card

- Turn on the router
- Connect to the router using the wireless key: Written on the back of each router
- Open the browser and enter the following IP address: 192.168.8.1



## APN configuration: Method #1

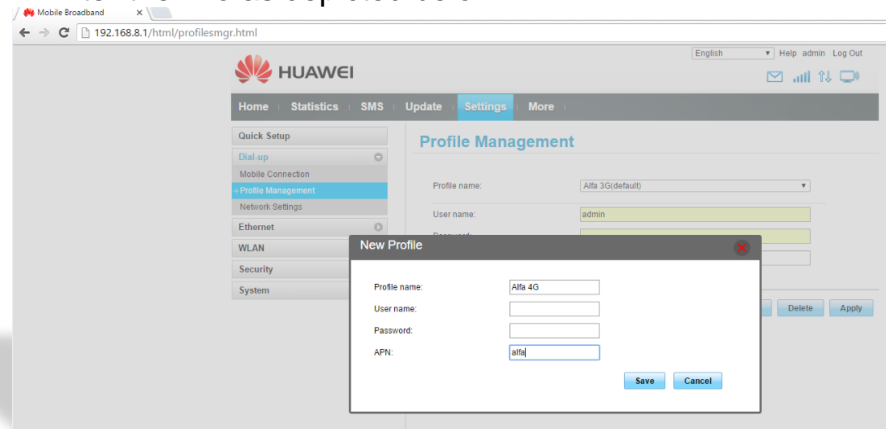
- Click on settings
- Choose “Quick Setup”
- Enter the info as depicted below



- Click on “Save”
- Then click on Next → Next then click on Finish

## APN configuration: Method #2

- Click on settings
- Choose “Dial Up” and then “Profile Management”
- Enter the info as depicted below



- Click on “Save”

## Network Selection

- Select "Dial Up"
- Click on "Network settings"



The screenshot shows the Huawei web interface. At the top left is the Huawei logo. The top right has a language dropdown set to 'English', and links for 'Help', 'admin', and 'Log Out'. Below this is a navigation bar with 'Home', 'Statistics', 'SMS', 'Update', 'Settings', and 'More'. The 'Settings' tab is active. On the left is a sidebar menu with 'Quick Setup' (containing 'Dial-up', 'Mobile Connection', 'Profile Management'), 'Network Settings' (highlighted), 'Ethernet', 'WLAN', 'Security', and 'System'. The main content area is titled 'Network Settings' and contains the following settings:

- Network**
- Support LTE networks:  On
- Network Search**
- Mode: Auto

An 'Apply' button is located at the bottom right of the settings area.

- Apply