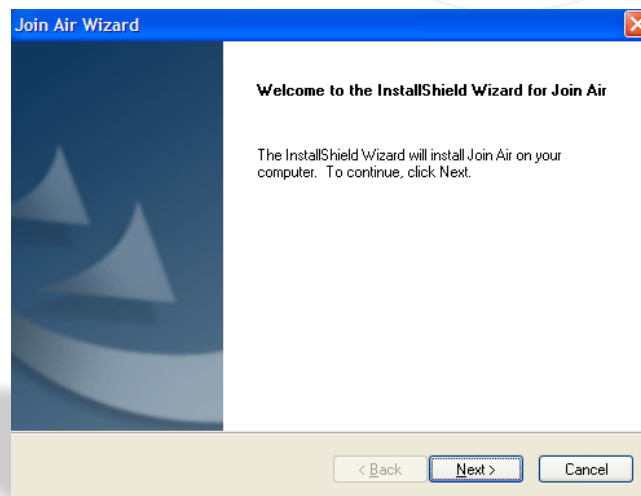


ZTE

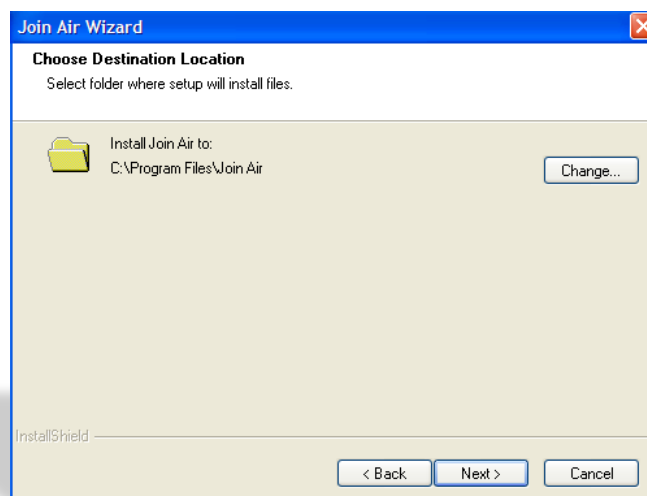
Dongle Installation for Windows



- Plug the dongle, and wait for the **Join Air Wizard** to start
- Click **Next**



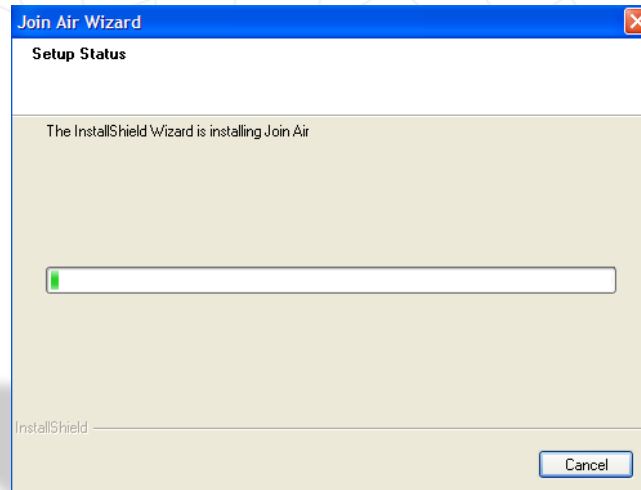
- Choose Destination Location
- Click **Next**



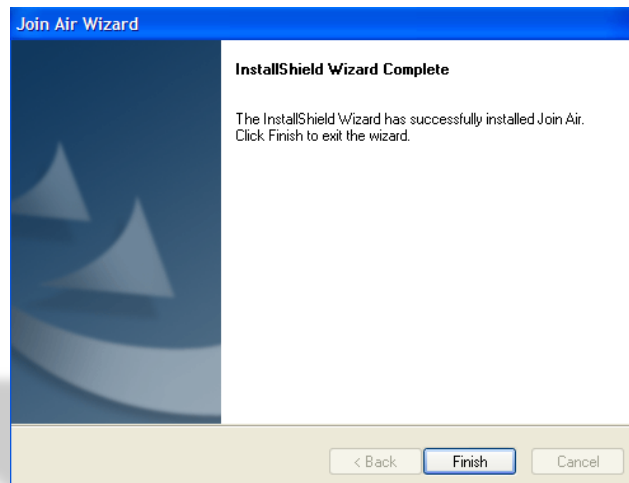


Setup Status Page

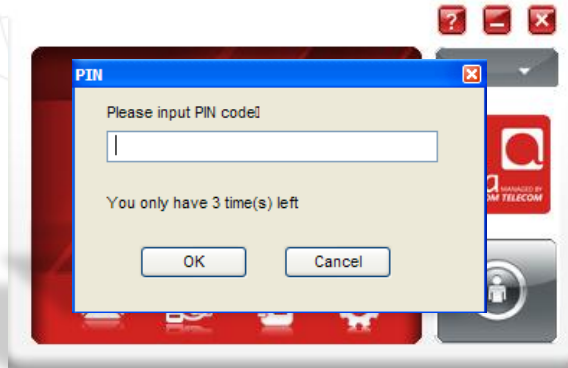
- Wait for the download to finish



Click Finish



- The ZTE software will start automatically
- Enter the **SIM pin code** in the **PIN** page
- Click **OK**



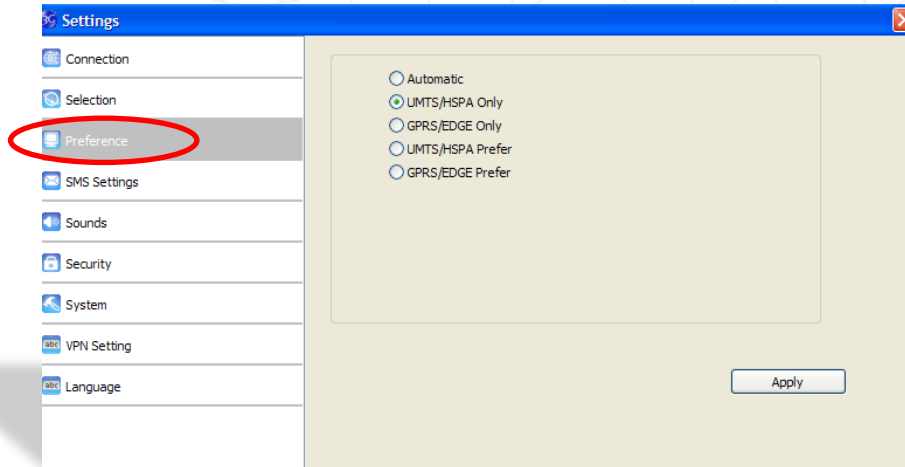
- On the homepage of the ZTE dashboard
- Click on **Settings**





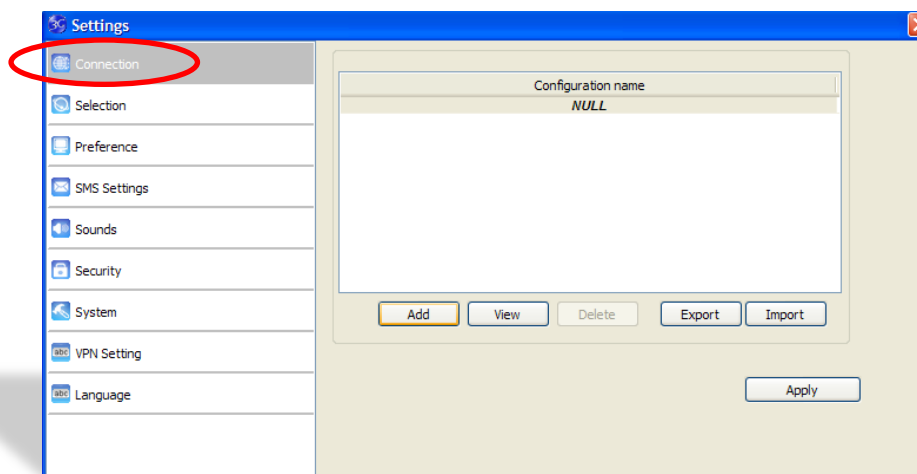
Settings window

- Select **Preference**
- Select **UMTS/HSPA Only**
- Click **Apply**



Settings window

- Select **Connection**
- Click on **Add**





Connection window

- Select **Common** tab
- Enter the information as follow
Config name: **3G**
Dial number: ***99#**
APN select: **usb.mic1.com.lb**
- Click **Save**

Connection

Common Advance

Config File

Config name

Dial number

APN

Obtain APN address automatically

Use the following APN address

User name

User name

Password

Save Cancel

Click **OK**

Connection

Set OK!

OK

ZTE dashboard

- Click on the connect button

