

ZTE

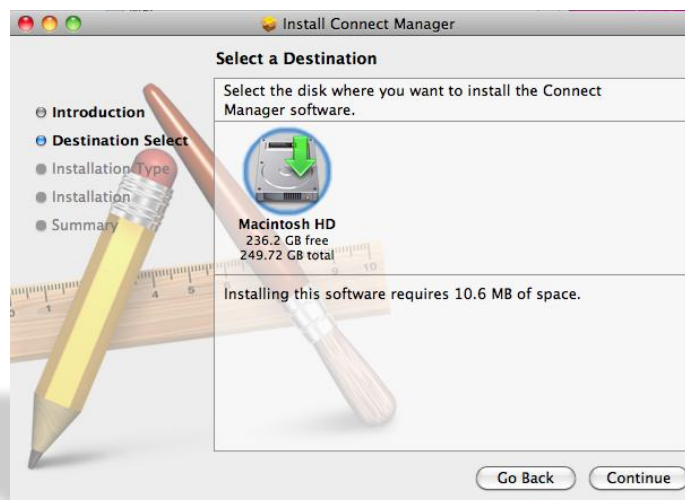
Dongle Installation for Mac



- Plug the dongle; The **Install Mobile Partner** wizard will start automatically
- Click **Continue**

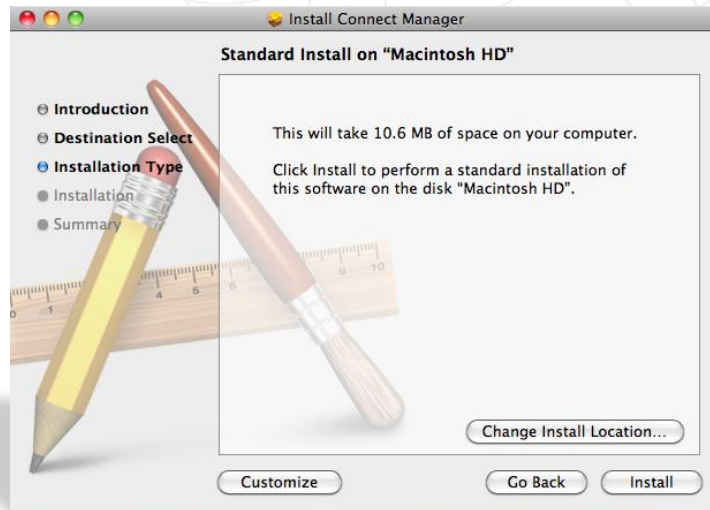


- **Destination Select** tab
- Click **Continue**



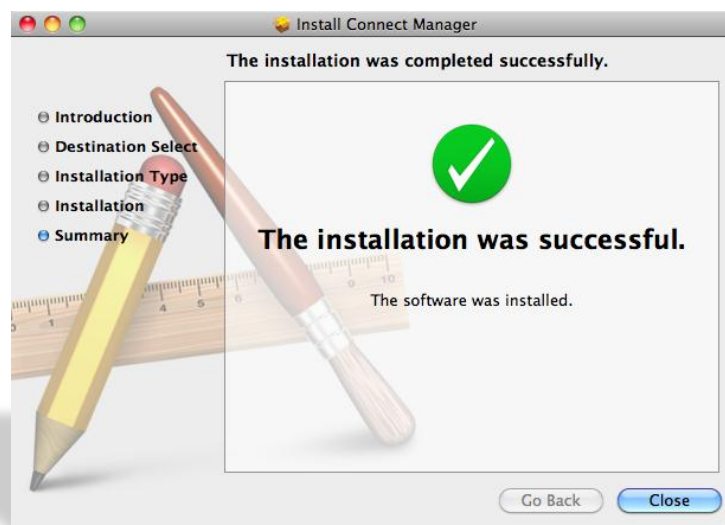
Installation Type tab

- Click **Install**



Summary tab

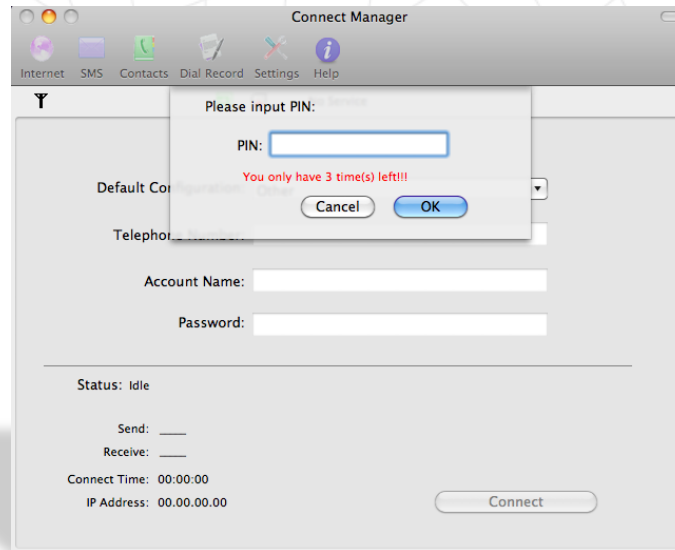
- Click **Close**





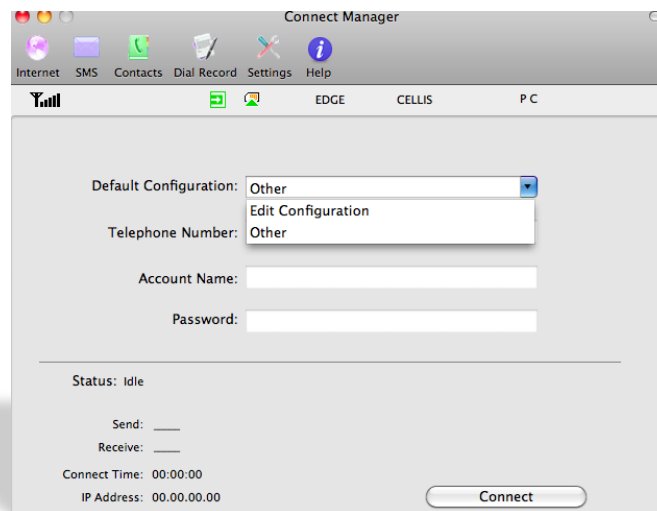
Connect Manager window

- Enter the **PIN**
- Click **OK**



Connect Manager window

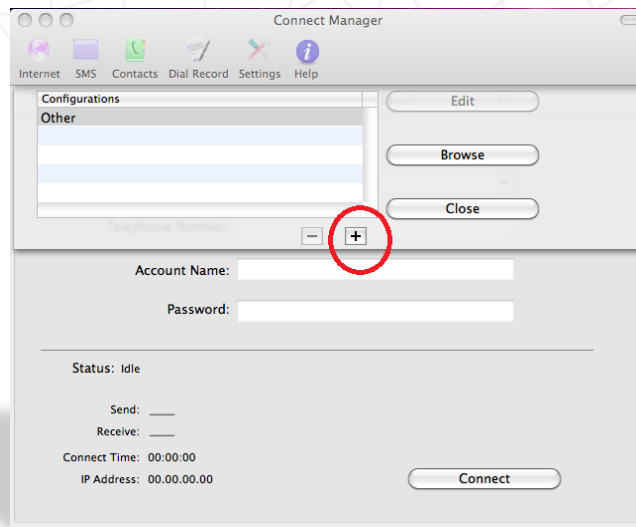
- Select **Edit Configuration** from the **Default Configuration** list





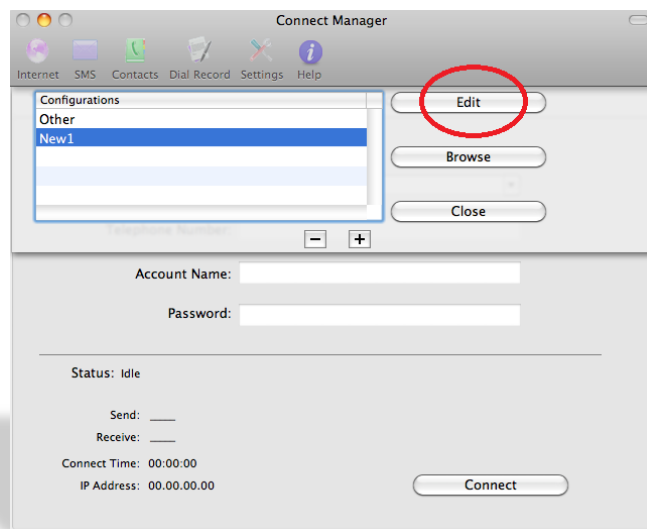
Connect Manager window

- Click on the “+” button



Connect Manager window

- Click on the **Edit** button





Fill the fields in the **Connect Manager** window

- Description: **3G**
- Telephone Number: ***99#**
- Click **Save Username and Password**
- Click **Use the following APN name**
Enter: **usb.mic1.com.lb**
- Click **Obtain DNS server address automatically**
- Click **Obtain PDP address automatically**
- Click **Obtain PDP address automatically**
Click: **PAP**
- Click **OK**

The screenshot shows the 'Connect Manager' window with the following configuration:

- Description: New1
- Account Name: [Empty]
- Telephone Number: [Empty]
- Password: [Empty]
- Save Username and Password
- Obtain APN address automatically
- Use the following APN name
- APN: [Empty]
- Obtain DNS server address automatically
- Use the following DNS server address
- Preferred DNS: [Empty]
- Alternate DNS: [Empty]
- Obtain PDP address automatically
- Use the following PDP address
- Address: [Empty]
- Authentication Mode:
 - PAP
 - CHAP

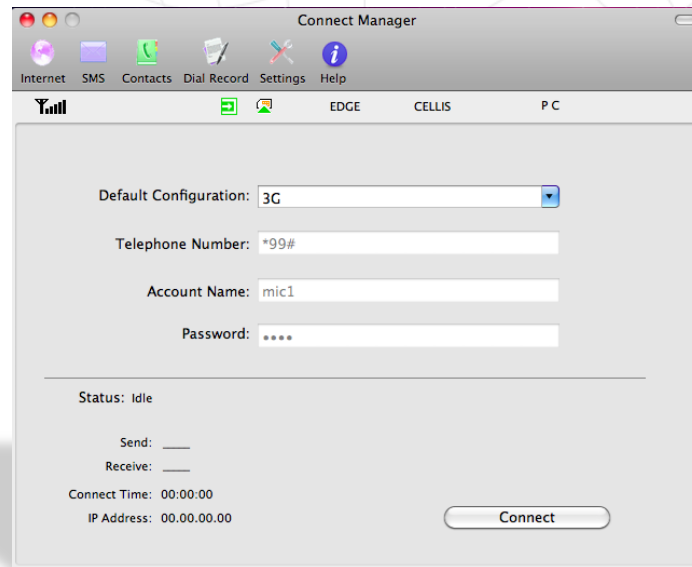
Buttons: Cancel, OK

Send: ___
Receive: ___
Connect Time: 00:00:00
IP Address: 00.00.00.00
Connect



Connect Manager window

- Select **3G** from the **Default Configuration** list
- Click **Connect**



Connect Manager window

- Status will change to **Connected**

